

# Outer Dowsing Offshore Wind

## Environmental Statement

### Chapter 11 Marine Mammals

### Volume 2 Figures

Date: March 2024

Document Reference: 6.2.11

Pursuant to APEP Regulation: 5(2)(a)

Rev: 1.0



Company:	<b>Outer Dowsing Offshore Wind</b>	Asset:	<b>Whole Asset</b>			
Project:	<b>Whole Wind Farm</b>	Sub Project/Package:	Whole Asset			
Document Title or Description:	Chapter 11 Marine Mammals Figures					
Internal Document Number:	PP1-ODOW-DEV-CS-FIG-0011	3 <sup>rd</sup> Party Doc No (If applicable):	N/A			
Outer Dowsing Offshore Wind accepts no liability for the accuracy or completeness of the information in this document nor for any loss or damage arising from the use of such information.						
Rev No.	Date	Status / Reason for Issue	Author	Checked by	Reviewed by	Approved by
1	March 2024	DCO Application	GoBe	GoBe	Shepherd & Wedderburn	Outer Dowsing

## Table of Figures

- Figure 11.1 Study Area v3 (document reference 6.2.11.1)
- Figure 11.2 Harbour Porpoise v3 (document reference 6.2.11.2)
- Figure 11.3 Bottlenose Dolphin v3. (document reference 6.2.11.3)
- Figure 11.4 Harbour Seal v3 (document reference 6.2.11.4)
- Figure 11.5 Grey Seal v3 (document reference 6.2.11.5)
- Figure 11.5 Cumulative Effects v3. (document reference 6.2.11.6)














-500000

0

500000

1000000



- Legend**
-  Array Area
  -  Offshore Export Cable Corridor
  -  ORCP Area
  -  Artificial Nesting Structure Area
  -  Biogenic Reef Restoration Area
  -  4km Survey Area for Marine Mammals
  -  North Sea MU (Harbour Porpoise)
  -  Greater North Sea MU (Bottlenose Dolphin)
  -  Celtic and Greater North Sea MU (White-beaked Dolphin and Minke Whale)
  -  Northeast England MU (Grey Seal)
  -  Southeast England MU (Grey and Harbour Seal)

6500000

6500000

6000000

6000000

5500000

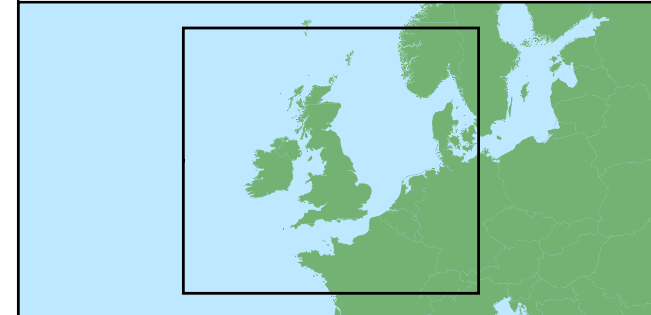
5500000

-500000

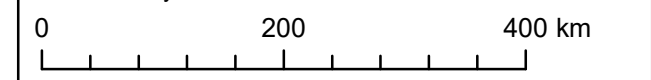
0

500000

1000000



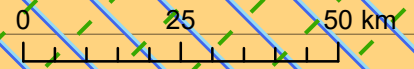
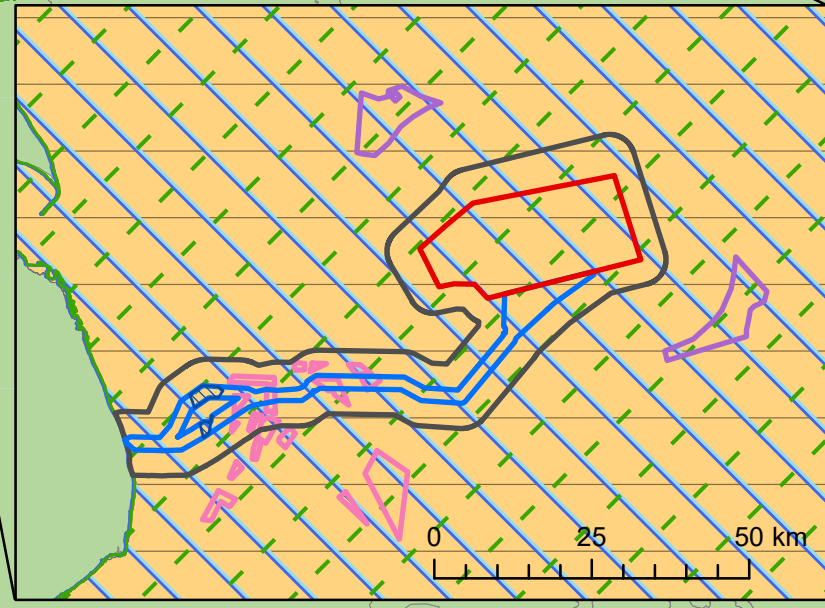
Coordinate System: WGS 1984 UTM Zone 31N



Scale: 1:6,250,000 A3 Page Size

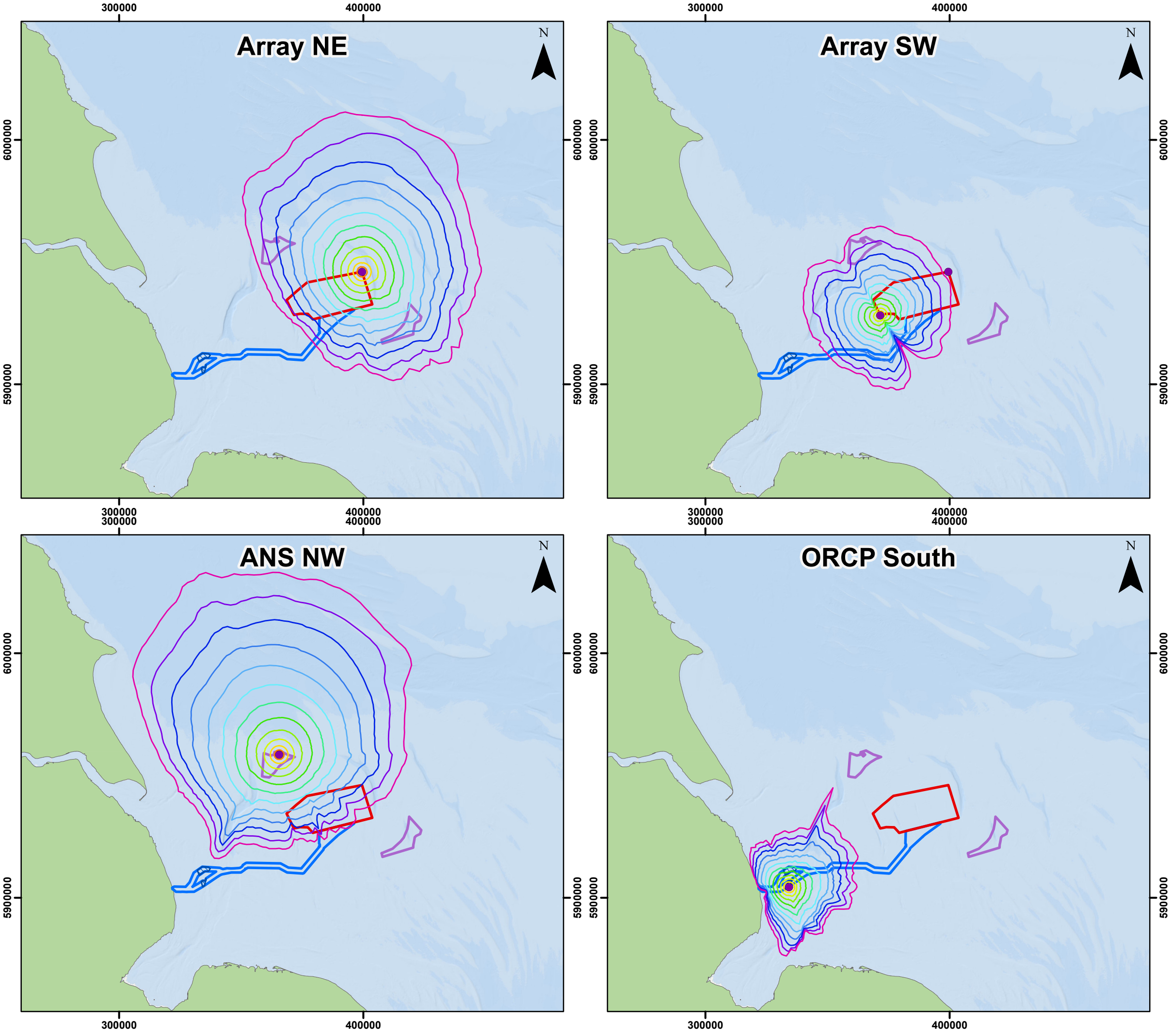
Environmental Statement  
Marine Mammal Study Area

Figure 11.1



Document Path: Z:\GIS\GIS - Projects\0152 Outer Dowsing EIA\GIS\Figures\ES\Marine Mammals\ODOW\_0152\_MM\_Fig11.1\_Study Area\_v3.mxd





**Legend**

- Array Area
- Offshore Export Cable Corridor
- ORCP Area
- Artificial Nesting Structure Area
- Piling Locations

**Monopile 5dB SELs Disturbance Contours (dB)**

- 120
- 125
- 130
- 135
- 140
- 145
- 150
- 155
- 160
- 165
- 170
- 175
- 180



Coordinate System: WGS 1984 UTM Zone 31N

0 50 100 km

Scale: 1:1,500,000 A3 Page Size

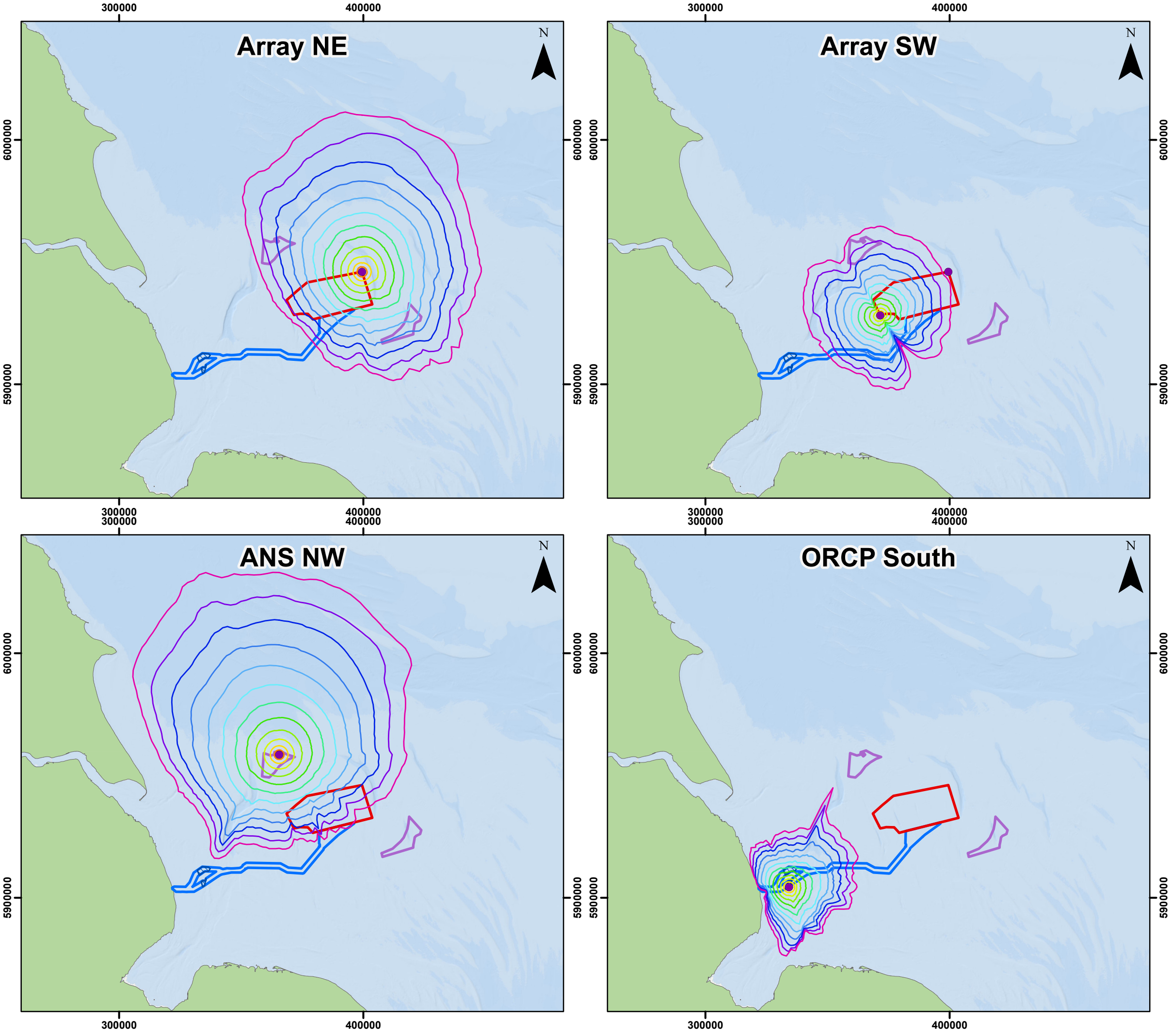
Environmental Statement

Harbour porpoise worst case behavioural disturbance contours

Figure 11.2







**Legend**

- Array Area
- Offshore Export Cable Corridor
- ORCP Area
- Artificial Nesting Structure Area
- Piling Locations

**Monopile 5dB SELs Disturbance Contours (dB)**

- 120
- 125
- 130
- 135
- 140
- 145
- 150
- 155
- 160
- 165
- 170
- 175
- 180



Coordinate System: WGS 1984 UTM Zone 31N

0 50 100 km

Scale: 1:1,500,000

A3 Page Size

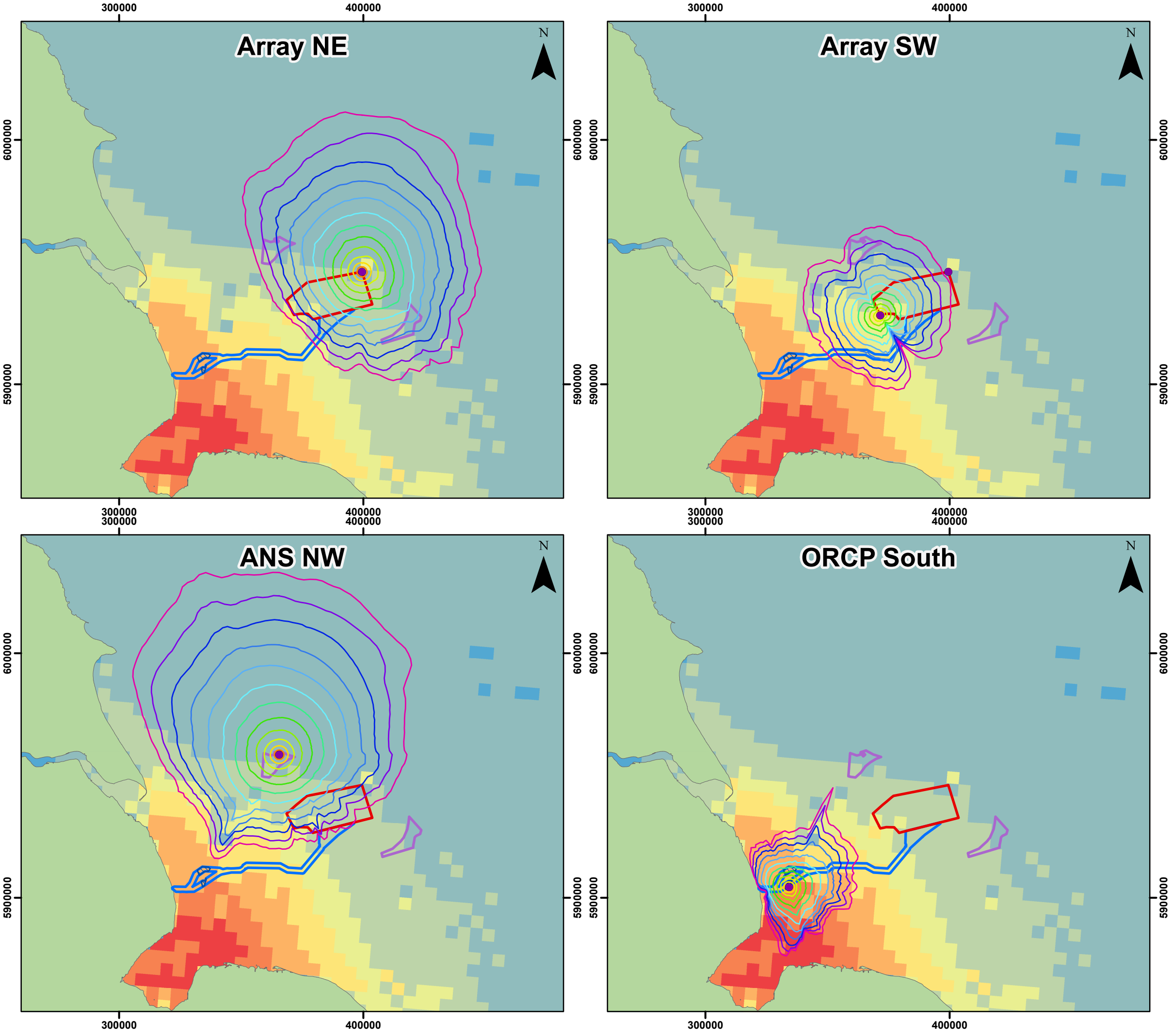
Environmental Statement

Bottlenose dolphin worst case behavioural disturbance contours

Figure 11.3







**Legend**

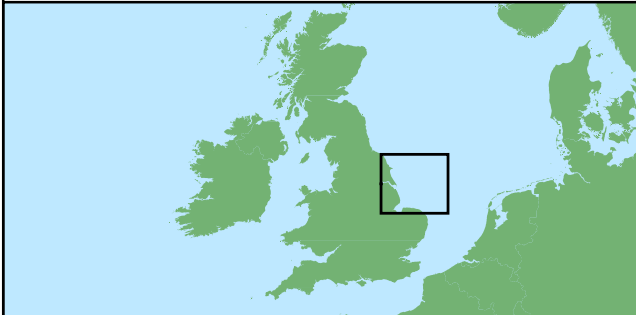
- Array Area
- Offshore Export Cable Corridor
- ORCP Area
- Artificial Nesting Structure Area
- Piling Locations

**Monopile 5dB SELs Disturbance Contours (dB)**

- 120
- 125
- 130
- 135
- 140
- 145
- 150
- 155
- 160
- 165
- 170
- 175
- 180

**Harbour Seals % At-Sea Population per 25km² (Carter et al. 2022)**

- 0
- 0 - 0.001
- 0.001 - 0.005
- 0.005 - 0.01
- 0.01 - 0.025
- 0.025 - 0.05
- 0.05 - 0.1
- >0.1



Coordinate System: WGS 1984 UTM Zone 31N

0 50 100 km

Scale: 1:1,500,000

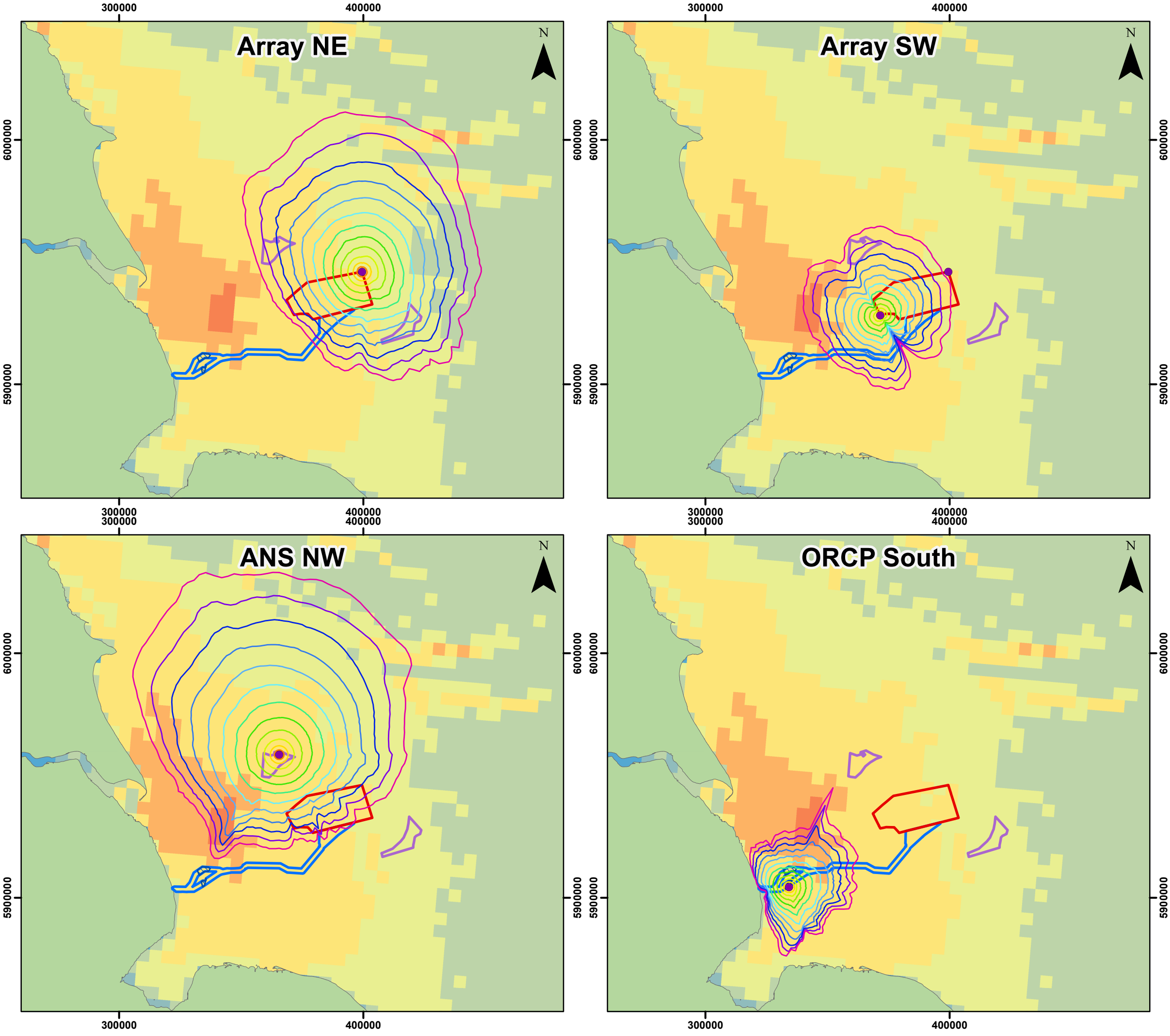
A3 Page Size

Environmental Statement

Harbour seal worst case behavioural disturbance contours

Figure 11.4





**Legend**

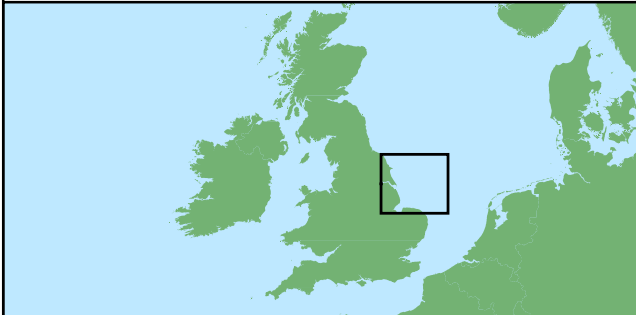
- Array Area
- Offshore Export Cable Corridor
- ORCP Area
- Artificial Nesting Structure Area
- Piling Locations

**Monopile 5dB SELs Disturbance Contours (dB)**

- 120
- 125
- 130
- 135
- 140
- 145
- 150
- 155
- 160
- 165
- 170
- 175
- 180

**Grey Seals % At-Sea Population per 25km² (Carter et al. 2022)**

- 0
- 0 - 0.001
- 0.001 - 0.005
- 0.005 - 0.01
- 0.01 - 0.025
- 0.025 - 0.05
- 0.05 - 0.1
- >0.1



Coordinate System: WGS 1984 UTM Zone 31N

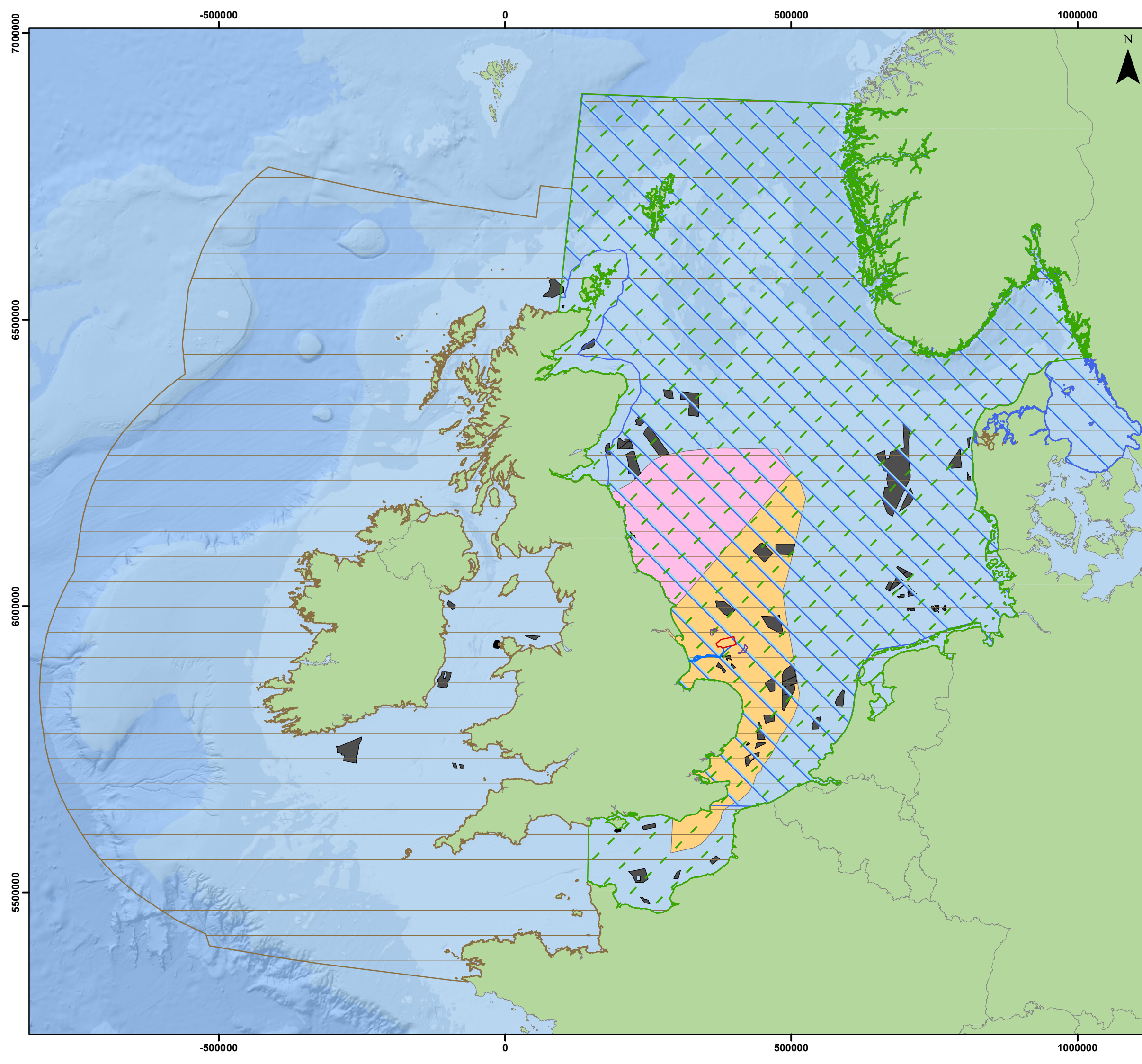
0 50 100 km

Scale: 1:1,500,000 A3 Page Size

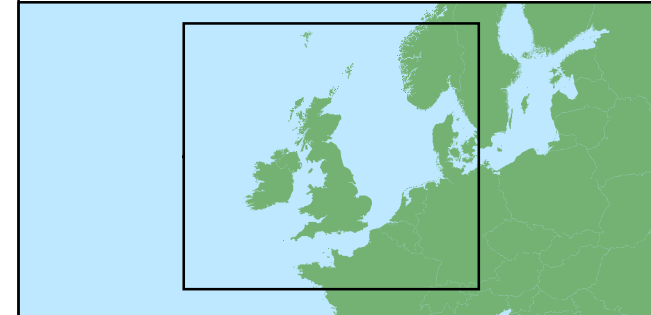
Environmental Statement

Grey seal worst case behavioural disturbance contours

Figure 11.5



- Legend**
- Array Area
  - Offshore Export Cable Corridor
  - Artificial Nesting Structure Area
  - North Sea MU (Harbour Porpoise)
  - Greater North Sea MU (Bottlenose Dolphin)
  - Celtic and Greater North Sea MU (White-beaked Dolphin and Minke Whale)
  - Northeast England MU (Grey Seal)
  - Southeast England MU (Grey and Harbour Seal)
  - Cumulative Effects Assessment Sites



Coordinate System: WGS 1984 UTM Zone 31N  
 0 200 400 km  
 Scale: 1:6,250,000 A3 Page Size

Environmental Statement  
 Cumulative Effects Assessment for Marine Mammals  
 Figure 11.6



Date: 12/03/2024  
 Produced By: BPHB  
 Revision: 0.1

Contains ESRI Basemapping; Esri, Garmin, GEBCO, NOAA NGDC, and other contributors

Document Path: Z:\GIS\GIS - Projects\0152 Outer Dowsing EIA\GIS\Figures\ES\Marine Mammals\ODOW\_0152\_MM\_Fig11.6\_Cumulative\_Effects\_v3.mxd